

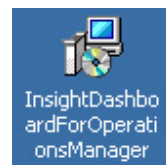
Installation Guide for *Insight Dashboard for Operations Manager*

Requirements before installation

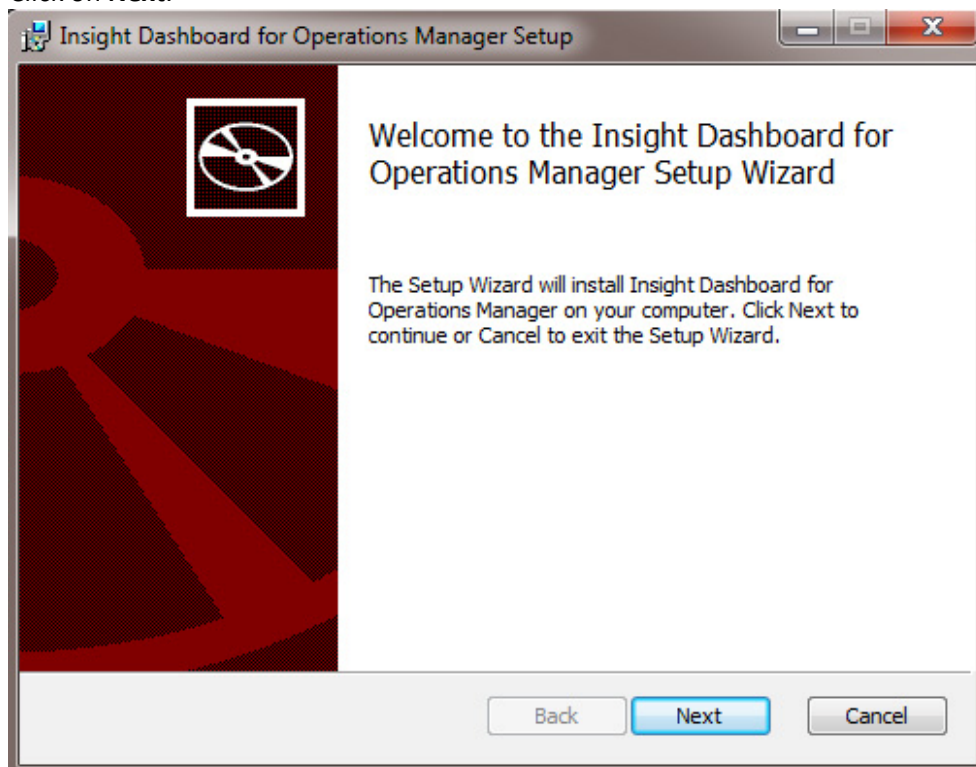
1. Ensure that you have **Insight Studio 3.7.1.56889** or above installed in your system.
2. To check the version of your Insight Studio, go to
Insight Studio > Help > About
 - a. For Version 3.7.1.56889 or above, go to <http://www.altosoft.com/downloads/insight30dayeval.asp> and download Insight On-Premise
3. Insight Dashboard for Operations Manager requires **Adobe Flash Player 10** or above. To download, visit <http://get.adobe.com/flashplayer/>

Installation Guide

1. Download InsightDashboardForOpsMgr from <http://www.altosoft.com/products/operationsManager.shtml>
2. Unzip the file.

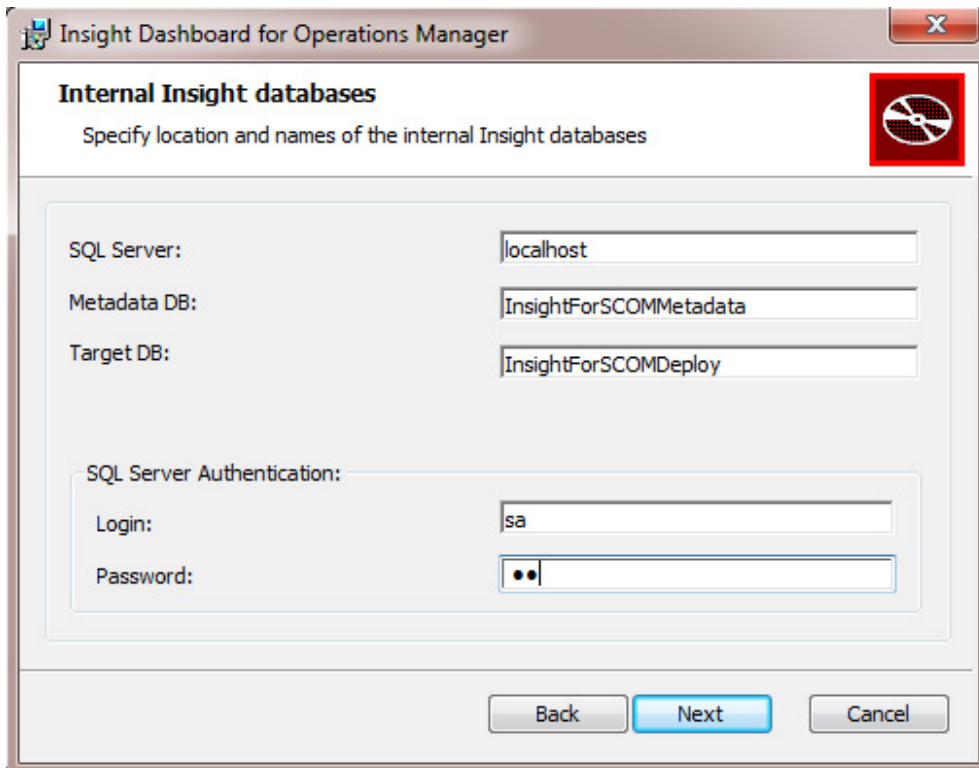


3. Run **InsightDashboardForOperationsManager.msi**
4. Click on **Next**.



5. Internal Insight databases

1. **SQL Server:** Enter the name of the server where your SQL server resides
2. **Metadata DB:** This database stores data configuration settings for the Insight Dashboard for Operations Manager. Rename the database as you wish; the default name is *InsightForSCOMMetadata*
3. **Target DB:** This database stores pre-processed data and dashboard display configurations for the Insight Dashboard for Operations Manager. Rename the database as you wish; the default name is *InsightForSCOMDeploy*
4. Enter the credentials to access your SQL Server
 - a. SQL Server Authentication Login
 - b. Password



Insight Dashboard for Operations Manager

Internal Insight databases

Specify location and names of the internal Insight databases

SQL Server: localhost

Metadata DB: InsightForSCOMMetadata

Target DB: InsightForSCOMDeploy

SQL Server Authentication:

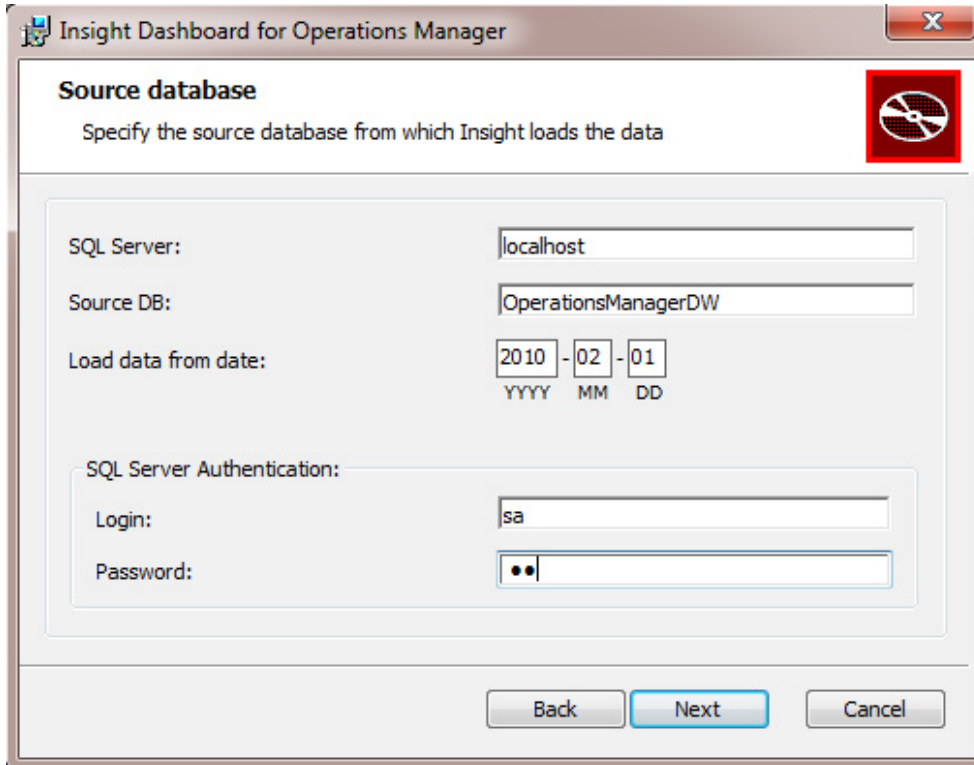
Login: sa

Password: ●●

Back Next Cancel

6. Source Database

1. **SQL Server:** Enter the name of the server where your database source resides.
2. **Source DB:** Enter the name of your source database.
3. **Load data from date:** Enter the date (YYYY-MM-DD) from which you would like your data to load from.
4. Enter the credentials to access your SQL Server
 - a. SQL Server Authentication Login
 - b. Password



Insight Dashboard for Operations Manager

Source database

Specify the source database from which Insight loads the data

SQL Server: localhost

Source DB: OperationsManagerDW

Load data from date: 2010 - 02 - 01
YYYY MM DD

SQL Server Authentication:

Login: sa

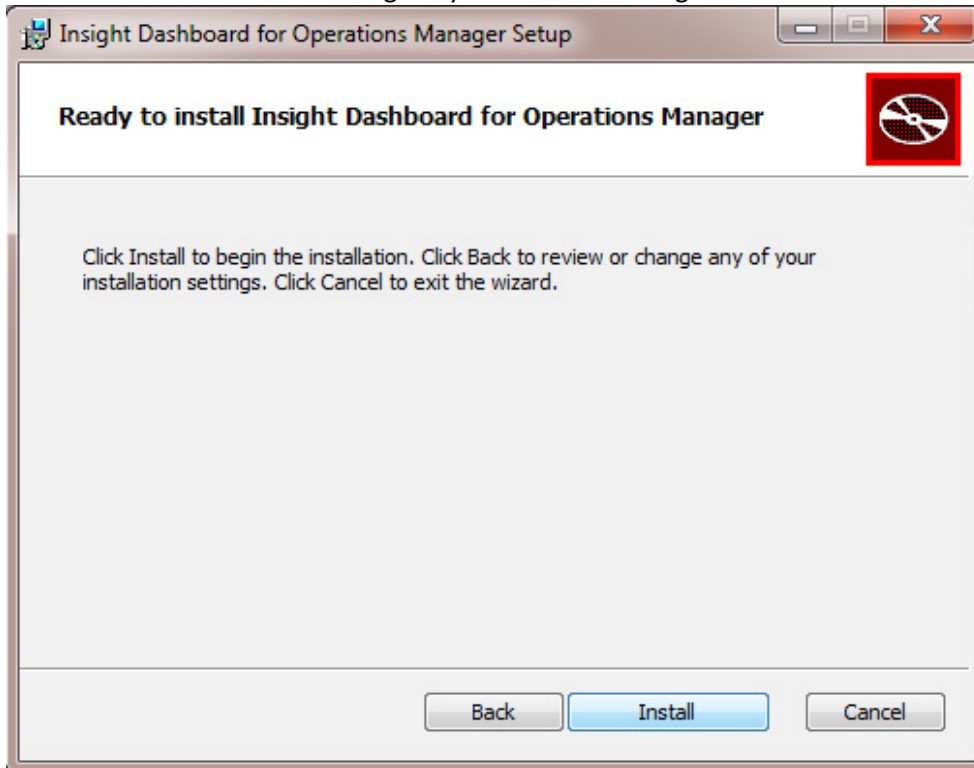
Password: ●●

Back Next Cancel

7. **Ready to install Insight Dashboard for Operations Manager.**

Click **Install** to continue with installation.

Click **Back** to review or change any installation settings



8. **Allow installation to continue.**

Click **Cancel** at any point to cancel the installation.

